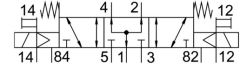
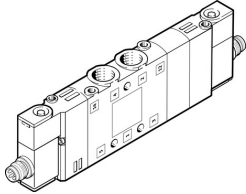


Air solenoid valve CPE10-M1CH-5/3BS-M7

Part number: 550232

FESTO



Data sheet

| Feature | Value |
|--|--|
| Valve function | 5/3, pressurized |
| Actuation type | Electrical |
| Width | 10 mm |
| Standard nominal flow rate | 300 l/min |
| Pneumatic working port | M7 |
| Operating voltage | 24V DC |
| Operating pressure | -0.09 MPa ... 1 MPa |
| Operating pressure | -0.9 bar ... 10 bar |
| Structural design | Piston gate valve |
| Reset method | Mechanical spring |
| Maritime classification | See certificate |
| Degree of protection | IP65 IP67 With plug socket as per IEC 60529 |
| Nominal width | 4 mm |
| Type code | CPE10 |
| Exhaust air function | With flow control option |
| Sealing principle | Soft |
| Mounting position | Any |
| Manual override | Detenting via accessory Non-detenting |
| Type of control | Pilot-controlled |
| Pilot air supply port | External |
| Flow direction | Reversible |
| Symbol | 00991031 |
| Valve position ID | Label holder |
| Lap | Overlap |
| Pilot pressure MPa | 0.3 MPa ... 0.8 MPa |
| Pilot pressure | 3 bar ... 8 bar |
| Switching time off | 20 ms |
| On switching time | 16 ms |
| Duty cycle | 100% |
| Max. positive test pulse with 0 signal | 1200 µs |
| Max. negative test pulse on 1 signal | 900 µs |
| Coil characteristics | 24 V DC: 1.28 W |
| Permissible voltage fluctuations | -15 % / +10 % |

| Feature | Value |
|--|--|
| Operating medium | Compressed air as per ISO 8573-1:2010 [7:4:4] |
| Information on operating and pilot media | Operation with oil lubrication possible (required for further use) |
| Vibration resistance | Transport application test with severity level 2 as per FN 942017-4 and EN 60068-2-6 |
| Shock resistance | Shock test with severity level 2 as per FN 942017-5 and EN 60068-2-27 |
| Corrosion resistance class (CRC) | 2 - Moderate corrosion stress |
| Temperature of medium | -5 °C ... 50 °C |
| Pilot medium | Compressed air as per ISO 8573-1:2010 [7:4:4] |
| Ambient temperature | -5 °C ... 50 °C |
| Max. tightening torque plug | 0.4 Nm |
| Product weight | 68 g |
| Electrical connection | 4-pin M8x1 |
| Type of mounting | With through-hole |
| Pilot exhaust air port 82 | M3 |
| Pilot exhaust air port 84 | M3 |
| Pilot air port 12 | M3 |
| Pilot air port 14 | M3 |
| Pneumatic connection 1 | M7 |
| Pneumatic connection 2 | M7 |
| Pneumatic connection 3 | M7 |
| Pneumatic connection 4 | M7 |
| Pneumatic connection 5 | M7 |
| Note on materials | RoHS-compliant |
| Seals material | NBR |
| Housing material | Die-cast aluminum |